



BroadSat, Customer Care

*Pent @media DVB card used with OPENSKYä
Services
Configuration Guide*

23/08/2002

SECTIONS

- I- Driver Installation

- II- Driver Configuration for Pent@Net, Pent@U+, Pent@Value
 - 1- *Settings*
 - 2- *Satellite settings*

- III- Driver Configuration for Pent@Visio

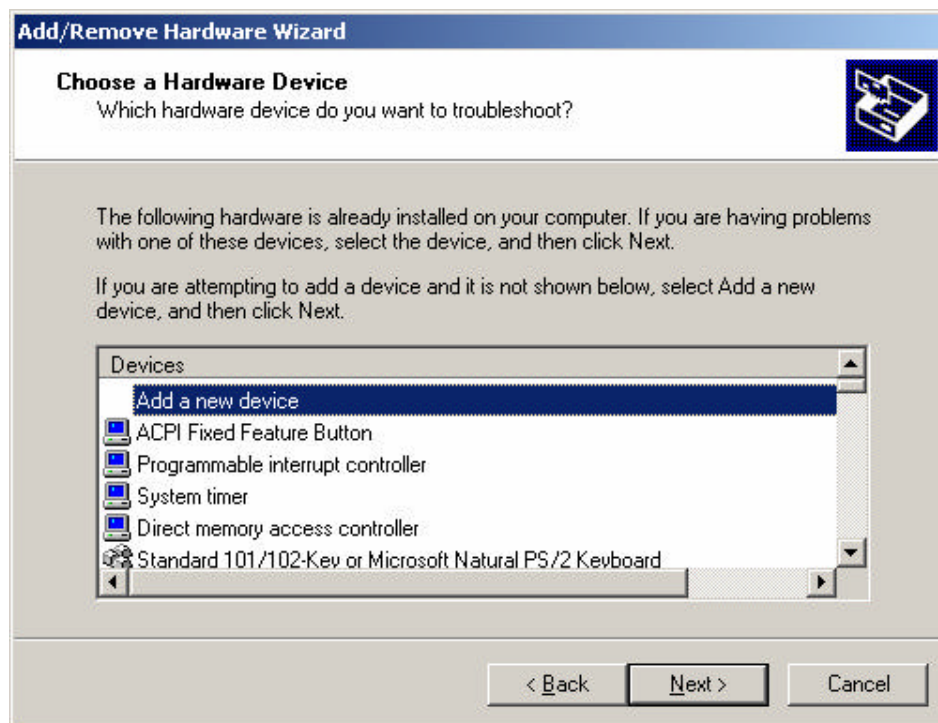
I – Driver Installation

The last drivers corresponding to your DVB card can be found at <http://www.pentamedia.com>

Only for the USB model (Pent@U+):

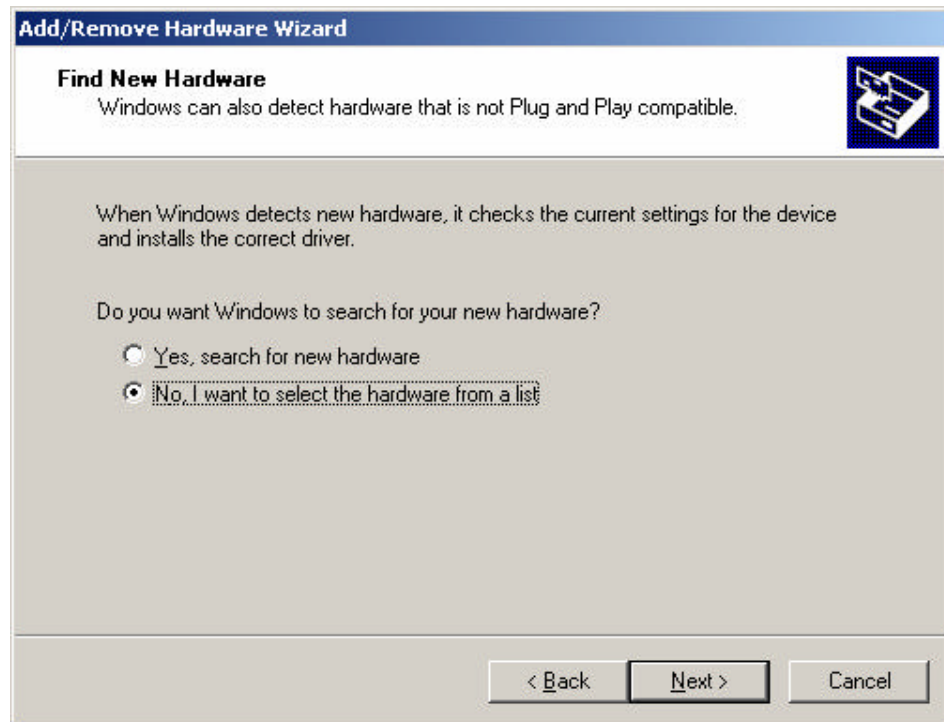
After the driver and applicative installation, you need to add the module the for network interface.

From the **Control Panel** you have to click on the **Add/Remove Hardware** icon, and select **Add a new device** (Fig. 1).



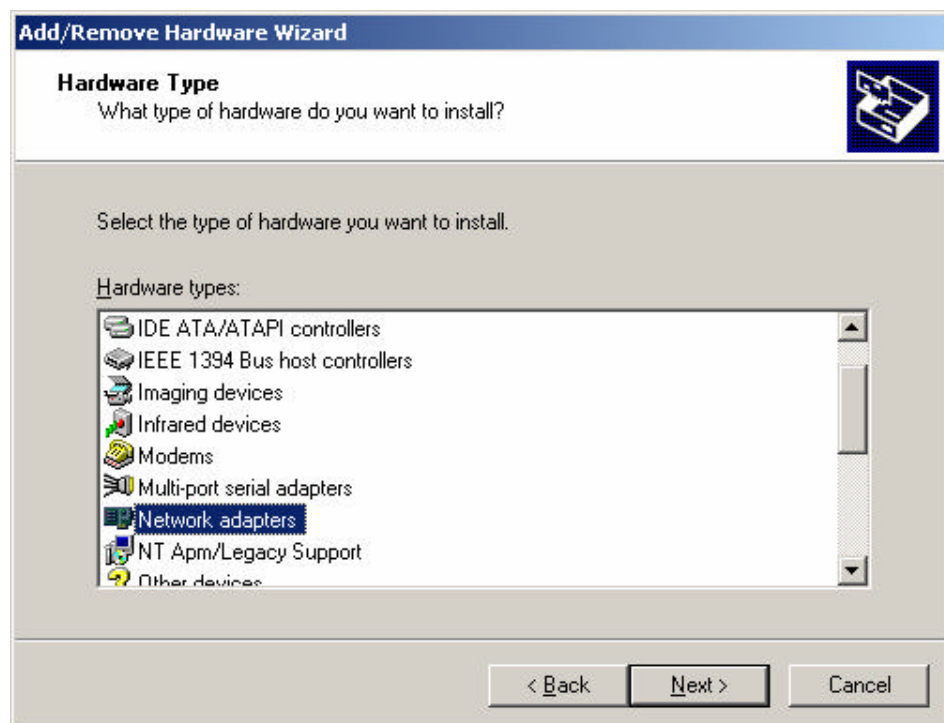
(Fig. 1)

Confirm the choice by clicking on **Next** and then select the **No, I want to select the hardware from a list** icon, in the following window (Fig. 2).



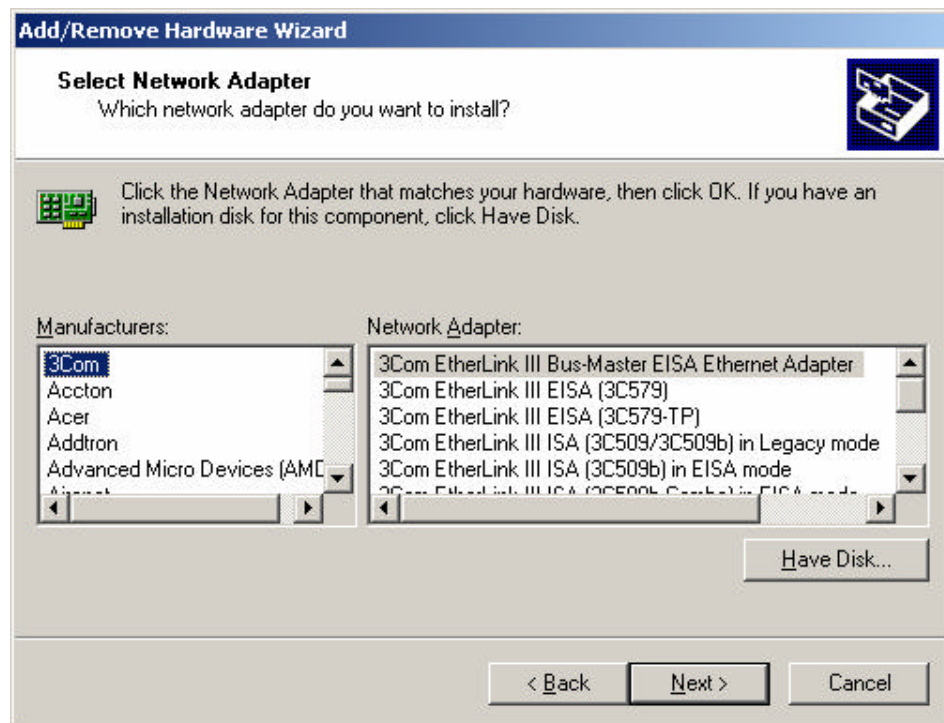
(Fig. 2)

Confirm the choice click on the **Next** button and select **Network Adapters** from the hardware list in the following window (Fig. 3).



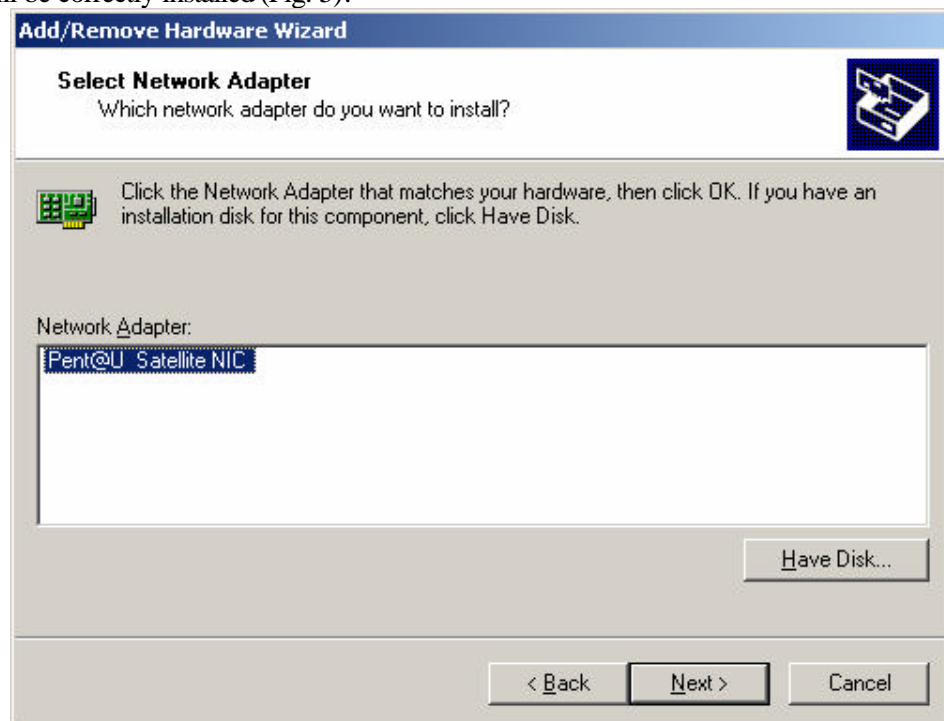
(Fig. 3)

Confirm the choice click on **Next** and on next window select **Have Disk** button (Fig. 4)



(Fig. 4)

Confirm the choice with **Next** and then insert the driver path: in this way, the Network interface will be correctly installed (Fig. 5).



(Fig. 5)

II – Driver Configuration for Pent@Net, Pent@U+, Pent@Value

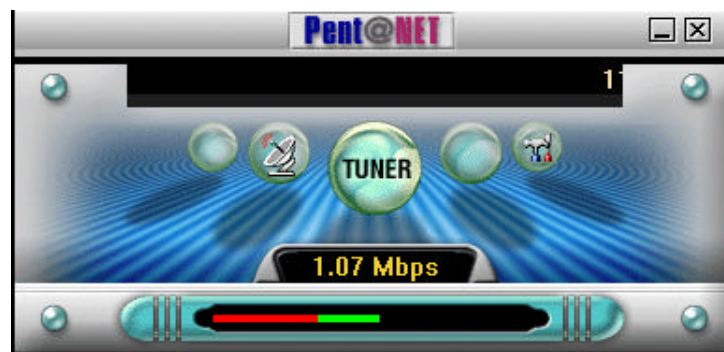
When the driver is installed, it is necessary to configure the TCP/IP protocol from the network in the Windows Control Panel and the satellite settings, using the **Penta@NET 3.0** utility, that can be found in Start → Programs → **PentaMedia**.

1. Settings

The TCP settings depend on the used operating system of the computer, where the DVB card is installed (see OS manual). In all situations a private IP address and a subnet mask (225.255.255.0) are assigned to the DVB card.

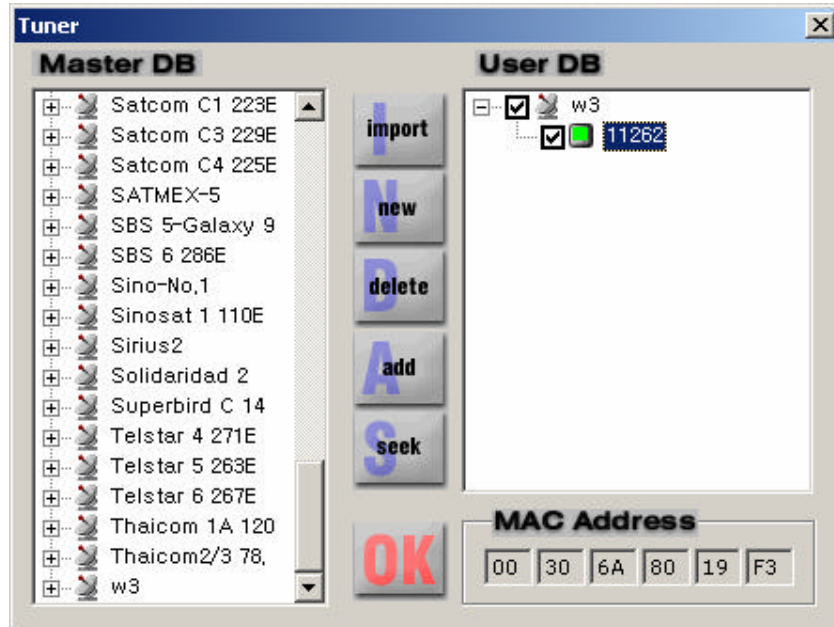
2. Satellite Settings

The Penta@NET card has a certain number of satellites which are set by default. If the wished satellite is not present in that list, it is necessary to insert it.



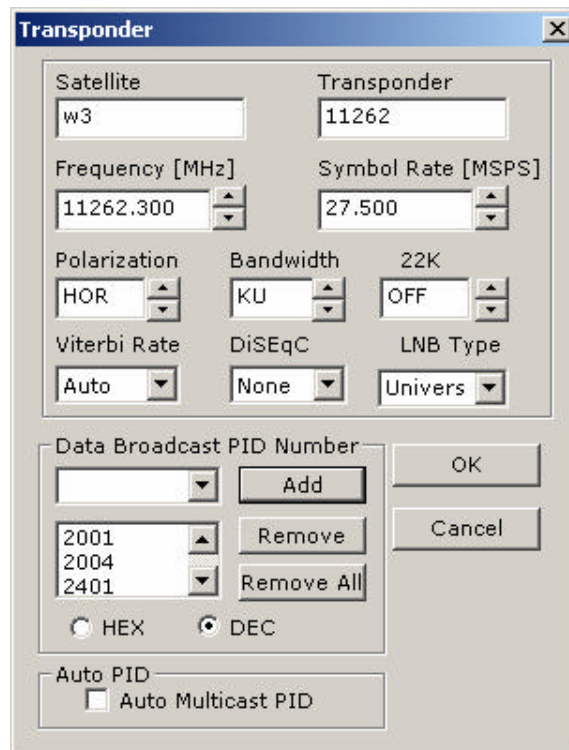
(Fig. 6)

First of all, it is better for you to go to the *Tuner menu*, by pressing the *Tuner Button* (Fig. 6).



(Fig. 7)

A new *Tuner* named window appears, where you can select the appropriate satellite or add a new satellite, if the wanted one is not in this list (Fig. 7). In this case press the *New* icon: a new *Transponder* named window will appear (Fig. 8).



(Fig. 8)

Satellite: an identifying satellite name has to be added (i. e. “w3” for Eutelsat satellite W3 at 7° East);

Transponder: the identifying name of the transponder has to be added (i. e. "11262");

Frequency [Mhz]: a transponder frequency in Mhz **11262.3** has to be added (and not 11.2623, which are GHz);

Symbol Rate [MSPS]: you have to put a value expressed in MSymbol **27.500** (and not 27500, which are KSymbol);

Polarity: Hor;

Bandwith: KU;

22K, Viterbi Rate, DiSEcQ: these values have to be set only in case of a dual feed LNB. The settings depend on each installation.

Data Broadcast PID Number: these are the PIDs you need for the OPENSKY™ services. The tool shows the PID value either in Decimal or Hexadecimal mode.

The PIDs to be added are:

	<i>Decimal</i>	<i>Hexadecimal</i>
Multicast	2001	7D1
	2002	7D2
	2004	7D4
Unicast¹	3010	BC2
	3011	BC3
	3012	BC4
	3013	BC5
Push	2401	961

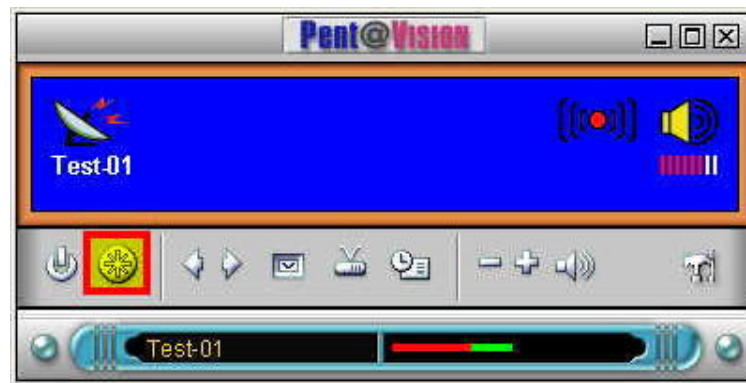
After inserting the PIDs, press the *OK* button and close the panel. At this point, the **W3** satellite will be available on the *Master DB* list (Fig. 7). Please select it and press the *add* button and make it switch to the *User DB* list. After selecting the transponder, press the *seek* button and lock the signal. When the signal is locked and everything is working, the *OK* button can be pressed.

Double click on the transponder name (in our case 11262) and edit the transponder settings.

¹ Assigned by Eutelsat upon registration.

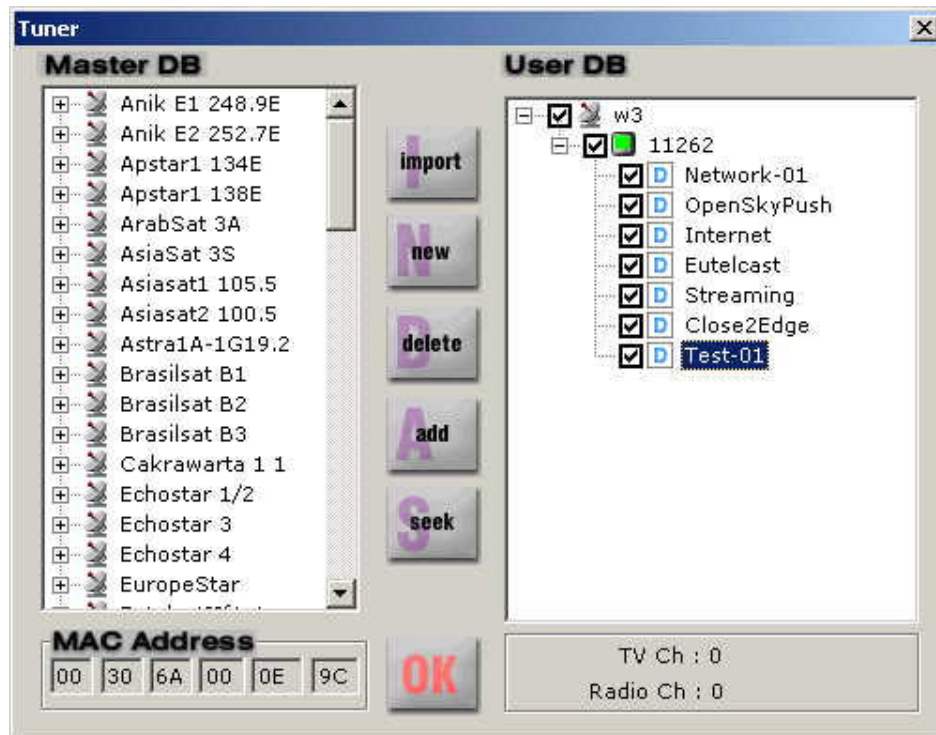
II – Driver Configuration for Pent@Visio

In the Penta@Visio card a certain number of satellites are set by default. If the wished satellite is not present in that list, it is necessary to insert it.



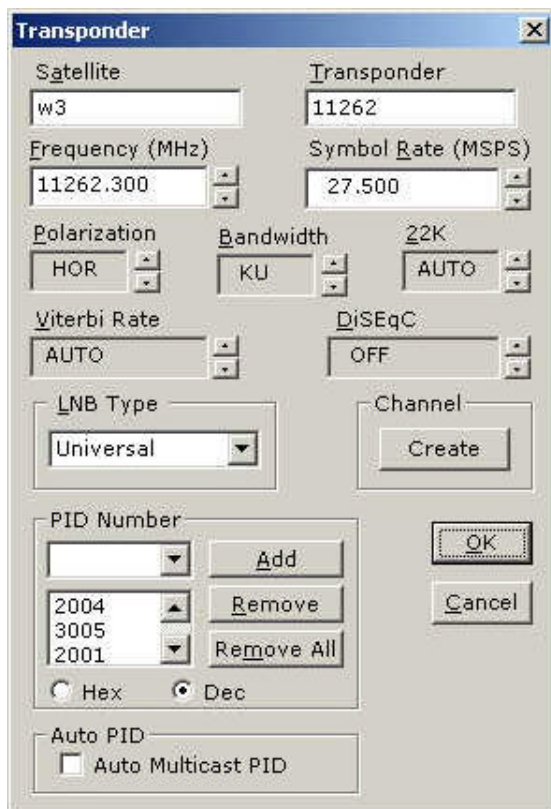
(Fig. 9)

First of all, you need to go on the *Tuner menu* by pressing the *Tuner Button* (Fig. 9).



(Fig.10)

A new named *Tuner* window appears, where it is possible to select the appropriate satellite or add a new satellite, if the wanted one is not in this list (Fig. 7). In this case press *New*: a new window named *Transponder* will appear (Fig. 8).



(Fig. 11)

Satellite: an identifying satellite name has to be added (i. e. “w3” for Eutelsat satellite W3 on 7 degrees East);

Transponder: the identifying name of the transponder has to be added (i. e. “11262”);

Frequency [Mhz]: a transponder frequency in Mhz **11262.3** (and not 11.2623, which are GHz);

Symbol Rate [MSPS]: you have to put a value expressed in MSymbol **27.500** (and not 27500, which are KSymbol);

Polarity: Hor;

Bandwith: KU;

22K, Viterbi Rate, DiSEqC: these values have to be set only in case of a dual feed LNB. The settings depend on each installation.

Data Broadcast PID Number: these are the PIDs you need for the OPENSky™ services. The tool shows the PID value either in Decimal or Hexadecimal mode.

The PIDs to be added are:

	<i>Decimal</i>	<i>Hexadecimal</i>
Multicast	2001	7D1
	2002	7D2
	2004	7D4
Unicast²	3010	BC2
	3011	BC3
	3012	BC4
	3013	BC5
Push	2401	961

After inserting the PIDs, press the *OK* button and close the panel. At this point, the **W3** satellite will be available on the *Master DB* list (Fig. 7). Select it and press the *add* button and make it switch to the *User DB* list. After selecting the transponder, press the *seek* button and lock the signal. When it is locked and everything is working, the *OK* button can be pressed.

Double click on the transponder name (in our case 11262) and edit the transponder settings.

There is also a program you can watch TV channels with this DVB Card. As previously said, it is possible to insert the channel frequencies, that are not present in the Tuner page (Fig. 10). After inserting the new values in the new transponder, select them and use the *seek* button in order to lock the signal. When the signal is locked and everything is working, press the *OK* button and watch the TV channels.

² Assigned by Eutelsat upon registration.