



BroadSat, Customer Care

TechnoTrend Budget model (PCI/USB version) used with OPENSKYä Services Configuration Guide

20/06/2002

SECTIONS

I- Driver Installation

II- Driver Configuration under Windows OS

I- Satellite settings

I – Driver Installation

It is possible to download the drivers from the section Downloads or System Support on the different provider web sites:

www.technotrend.com

www.hauppauge.de

www.galaxis.com

www.tmx.it

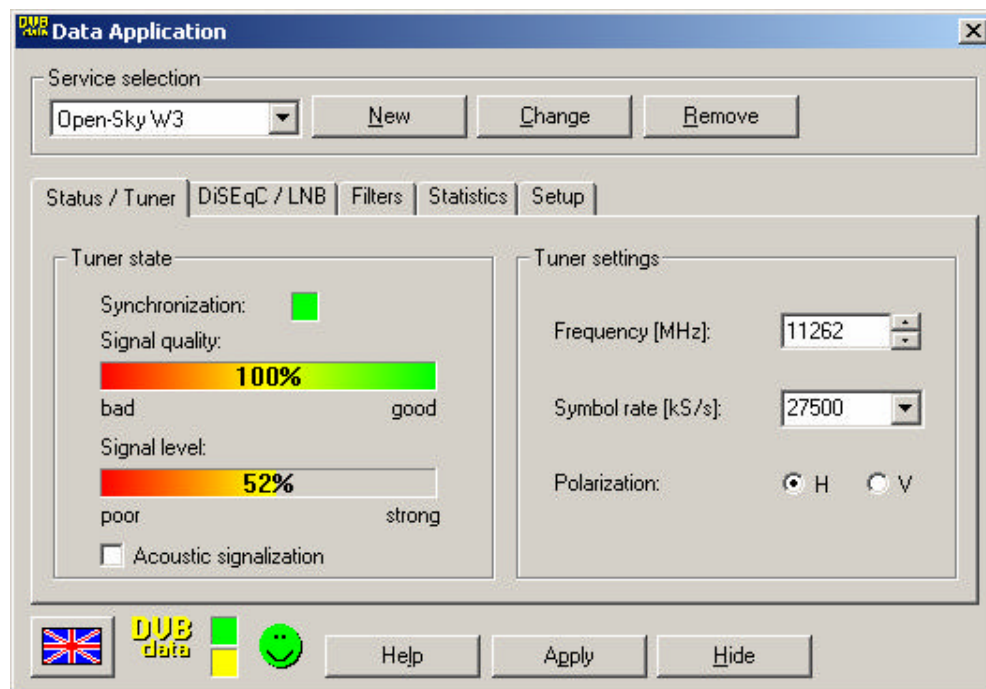
The driver used for the tests is the TechnoTrend, ver.1.46, which is available on the manufacturer web.

II – Driver Configuration

When the driver is installed, it is necessary to configure the satellite settings by using the utility **DVB Data Broadcast** that can be found in Start → Programs → Multimedia DVB PCI. With Hauppauge distribution the utility name is **DVB Data Services**. This program is located in the installation folder of the **Hauppauge WinTV DVB-S**.

1- Satellite Settings

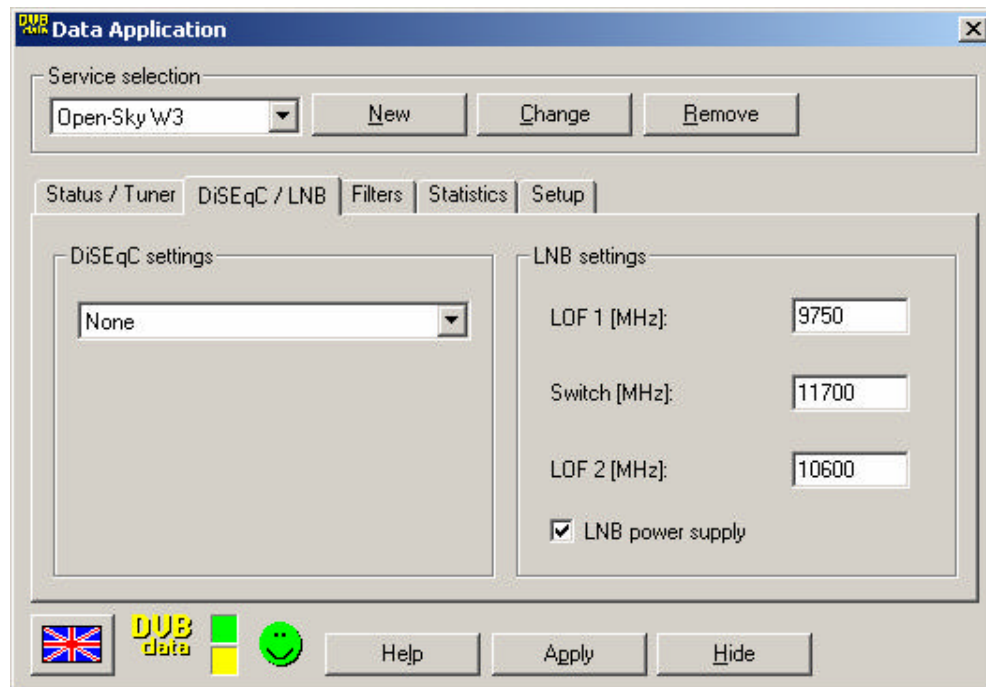
First of all, it is useful to add a new satellite by pressing the “New” button in “Service Selection” at the top of the driver screen and load the Eutelsat configuration parameters after the first configuration (Fig. 1).



(fig. 1)

In the first “Status/Tuner” Tag, the Frequency in MHz (11262), the Symbol Rate in kS/s (27500) and the polarization of the transponder have to be inserted.

Then, on the “DiSEqC/LNB” Tab (Fig. 2), it is possible to set the parameters that depend on the kind of the satellite installation. In the right part of this screen the LOF1 9750 value, 11700 Switch, LOF2 10600 and LNB power supply can usually be set.



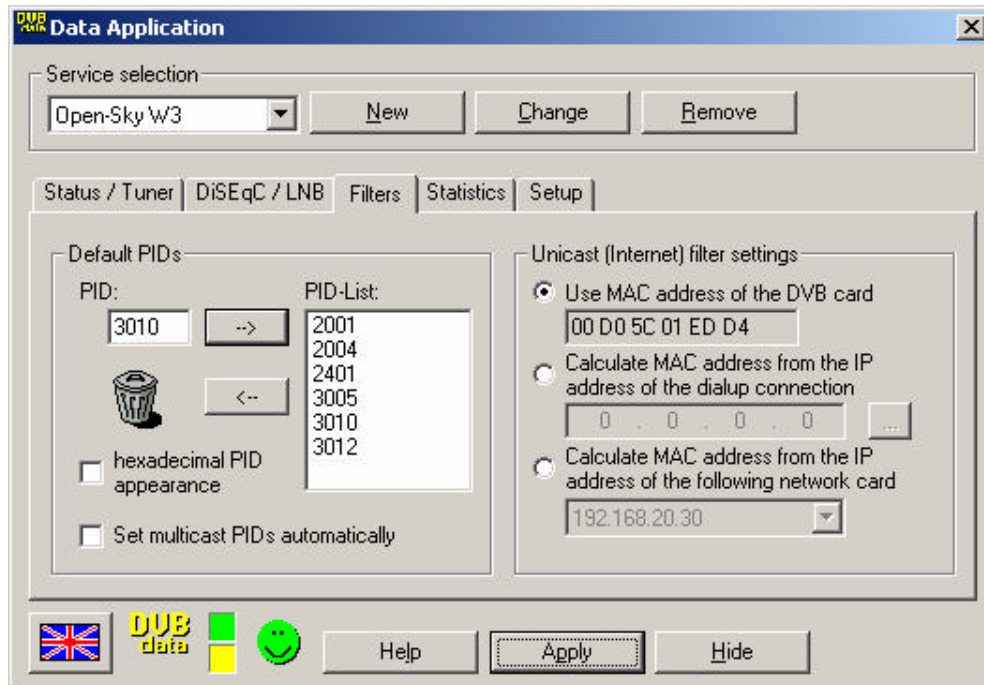
(Fig. 2)

After this, by selecting the “Apply” button the new parameters are loaded; if everything works fine, in the left part of the screen on the “Status/ Tuner” page the “Signal quality” and “Signal level” bars become green, as in fig. 1.

In the “Filter” page (Fig. 3) all PIDs used by the OPENSky service have to be inserted:

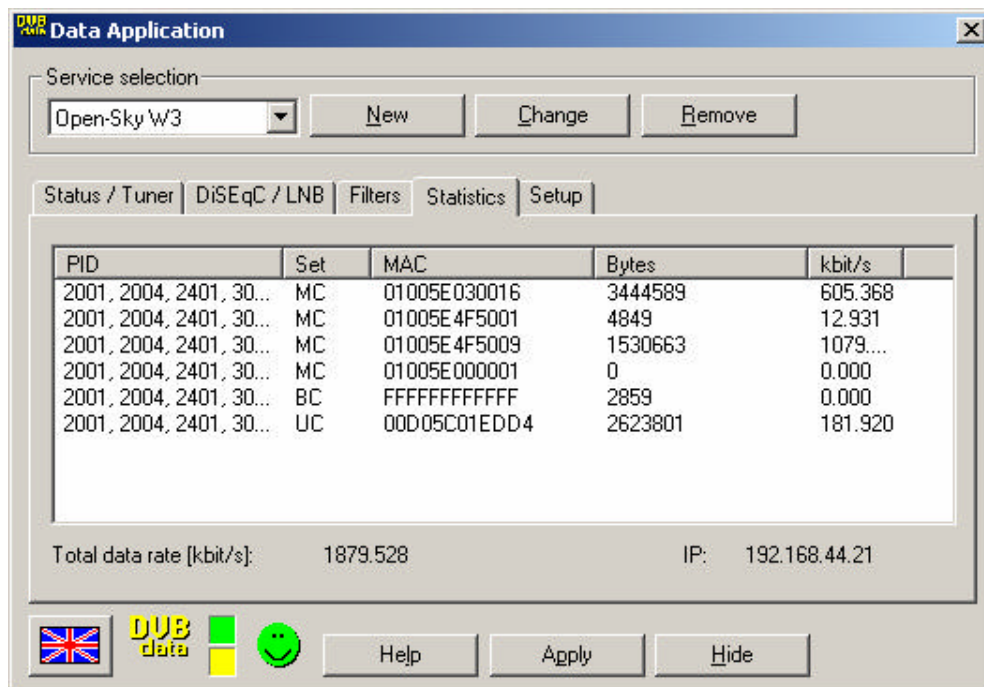
- Multicast service (Streaming video and Push service): 2001, 2004, 2401 (decimal value)
- Unicast service (Fast Internet): 30xx; these PIDs are assigned at registration.

In the right part of the screen, the “Use MAC address of the DVB card” option has to be selected.



(Fig. 3)

From the “Statistics” tag (Fig. 4), it is possible to have a look at the transmission data for every filter in real time (bytes received and speed in Kbit/s).



(Fig. 4)